



Belsize Road, London, NW6 4AB
£3,000 Per Month





2 x  2 x  1 x 

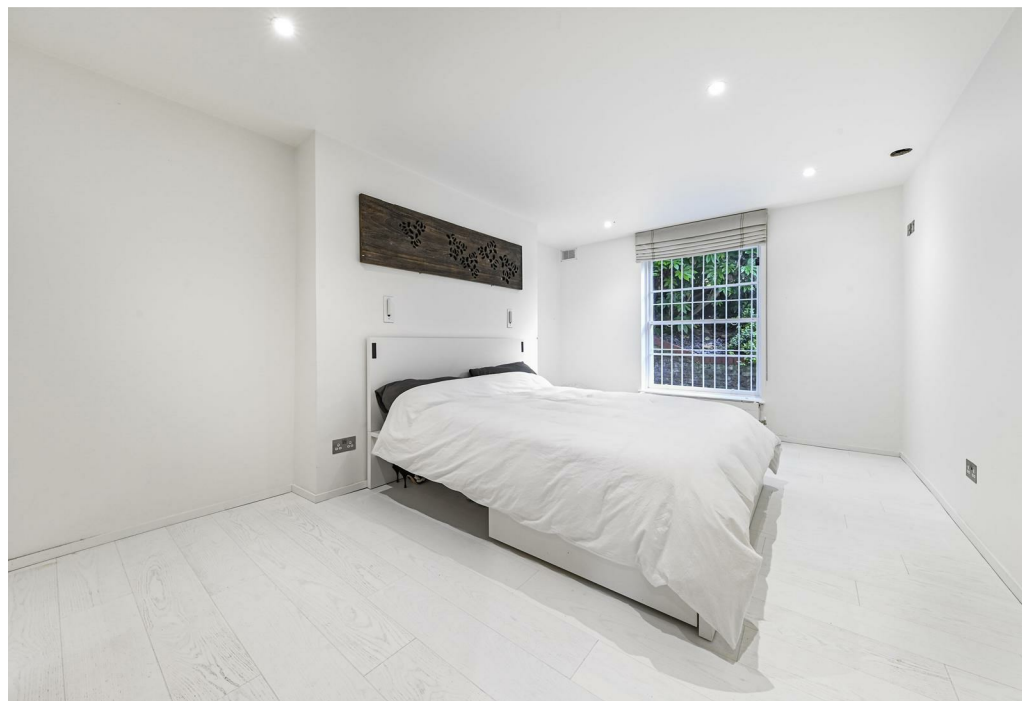
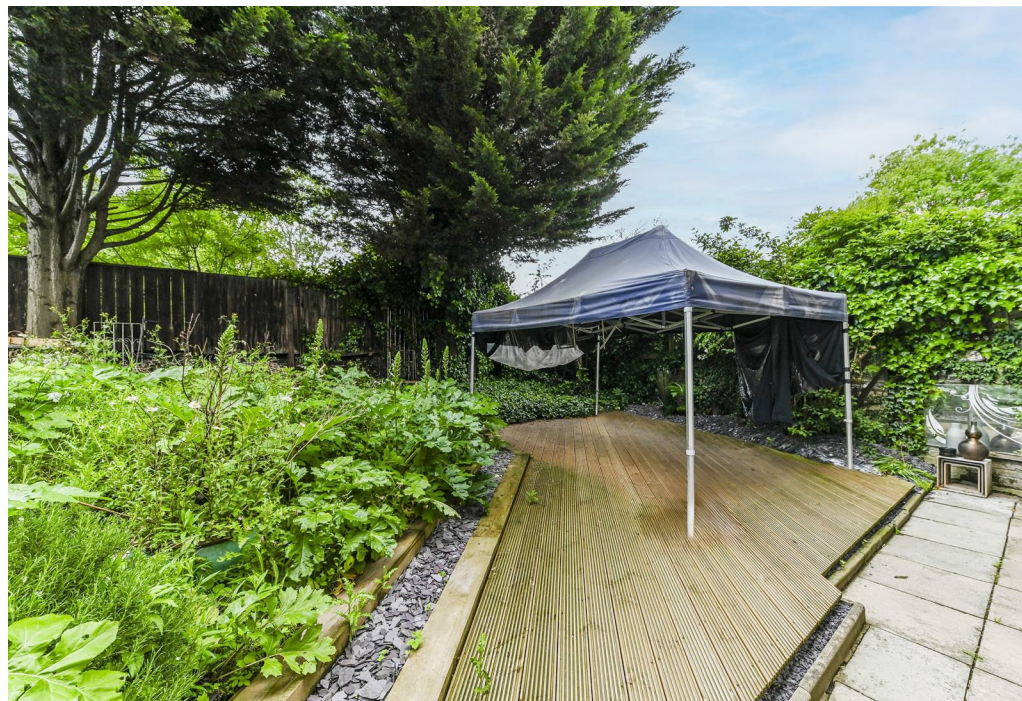
Welcome to this charming property located on Belsize Road in the heart of London. This delightful flat boasts a spacious 825 sq ft of living space, perfect for those seeking a comfortable and stylish home.

Upon entering, you are greeted by a welcoming reception room, ideal for entertaining guests or simply relaxing after a long day. The modern interior design adds a touch of elegance to the space, creating a warm and inviting atmosphere throughout.

The property features two generously sized double bedrooms, providing ample space for a growing family or for those in need of a home office. With two bathrooms, morning routines will be a breeze, ensuring convenience and privacy for all residents.

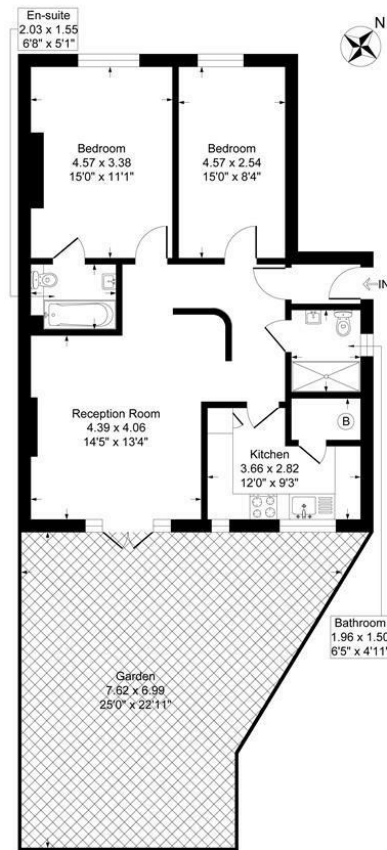
One of the highlights of this property is the shared garden, offering a tranquil escape from the hustle and bustle of city life. Whether you enjoy gardening or simply unwinding outdoors, this garden provides the perfect setting for relaxation.

Built in 1850, this flat seamlessly blends historic charm with contemporary comforts, offering a unique living experience for its future residents. Don't miss the opportunity to make this property your own and enjoy all that it has to offer in one of London's most sought-after locations.



Belsize Road, London, NW3

Approximate Gross Internal Floor Area = 76.6 sq m / 825 sq ft



Lower Ground Floor

Illustration for identification purposes only, measurements are approximate, not to scale.

Important Notice Debussy Property Service Ltd trading as Braithwait for themselves and for the vendor of this property whose agents they are, give notice that (i) these particulars do not constitute any part of an offer or contract, (ii) all statements contained within these particulars are made without responsibility on the part of Braithwait or the vendor, (iii) whilst none in good faith, none of the statements contained within these particulars are to be relied upon as a statement of representation or fact, (iv) any intending purchaser must satisfy him/herself by inspection or otherwise as to the correctness of each of the statements contained within these particulars, (v) the vendor does not make or give either Braithwait or any person within their employment any authority to make or give any representation or warranty whatsoever in relation to this property. Wide angled lenses may be used in photographs.

Call us on 0207 289 8889 or email sales@braithwait.co.uk

